

tecidosfiamabr  
fiamatecidos  
fiamatecidos

Coleção  
AQUA tec TEXTURAS

FIAMA  
TECIDOS

Rua Amância Cesarino, 235 | Pq. Industrial  
13031-480 | Campinas | SP  
T+55 19 3772.7270 | [www.fiama.com.br](http://www.fiama.com.br)

FIAMA  
TECIDOS



Coleção  
**AQUAtec** TEXTURAS

**Composição 71,44% Algodão e 28,56% Poliéster**

*Contett 71,44% cotton e 28,56% polyester*

*Composición: 71,44% Algodón e 28,56% poliéster*

Para informações adicionais sobre os acabamentos, verificar as etiquetas de manutenção e uso respectivos.

For additional information on finishings, check their maintenance and use labels.

Para obtener información adicional sobre los acabados, comprobar las etiquetas de mantenimiento y uso.

VEJA COMO ESCOLHER O ACABAMENTO MAIS ADEQUADO PARA SEU TECIDO.

HERE'S HOW TO CHOOSE THE MOST SUITABLE FINISH FOR FABRIC.

VEA CÓMO ELEGIR EL ACABADO MÁS ADECUADO PARA LA TELA.

NÍVEL DE PROTEÇÃO



ACABAMENTOS DE PROTEÇÃO  
**90**

Os tecidos Aquatec são desenvolvidos com as mais modernas tecnologias fabris, utilizamos as melhores matérias primas que garantem a resistência e durabilidade do acabamento de repelência, que confere proteção contra água, óleo e fixação de manchas e poeiras. Utilizar o tecido Aquatec em almofadas e mobílias de áreas externas, garantem muito mais conforto, requinte e resistência.

Aquatec was developed with the most modern and innovative technologies available. We utilize the highest quality raw materials that guarantee resistance and durability and a waterproof finishing that protects against water, oil, stain and other spills. Upholstering your outdoor cushions and furniture with Aquatec fabric will guarantee comfort, luxury, and longevity of your pieces.

Los tejidos Aquatec son desarrollados con las más modernas tecnologías fabriles, utilizamos las mejores materias primas que garantizan la resistencia y durabilidad del acabado repelente, que ofrece protección contra el agua, aceite y fijación de manchas y polvos. Utilizar el tejido Aquatec en cojine y muebles de áreas externas, garantizan mucho más confort, elegancia y resistencia.

PROTECTION LEVEL



AQUA INDOOR  
**92**

Ambientes internos também precisam de tecidos com resistência e ótima performance para facilitar a limpeza e manutenção do dia a dia. Por isso, a Fiamma completou sua linha Aquatec, com o Acabamento AQUA INDOOR, que possui propriedades de repelência aquosa e extra maciez.

Interior environments also require resistant fabrics and optimal performance to facilitate daily cleaning and maintenance. This is why Fiamma created the Aquatec line, with AQUA INDOOR finishing, with water repellent and extra soft properties.

Ambientes internos también necesitan de tejidos con resistencia y óptima performance para facilitar la limpieza y mantenimiento del día a día. Por eso, Fiamma ha terminado su línea Aquatec con el Acabado AQUA INDOOR, que posee propiedades de repelencia acuosa y extra suavidad.

NÍVEL DE PROTECCIÓN



LIVRE DE FUNGOS

Aquatec possui composição mista de fios de algodão e poliéster e recebe acabamentos de proteção completa antimicrobiana, antifúngica e antiviral. Nossos acabamentos para áreas externas recebem em sua fórmula o Zn2+, que traz a mais completa e integrada tecnologia de acabamento antiviral de alta performance. Seu princípio ativo, o Zinco, promove a proteção antimicrobiana de forma única nos tecidos tratados por ele, promovendo a desativação dos vírus (propriedade virucida, em vírus não envelopados e envelopados, principalmente vírus da

FUNGUS FREE

Aquatec has a mixed composition of cotton and polyester and receives complete finishing antimicrobial, anti-fungal and antiviral protection. Our finishing for outdoors areas receive in their formula the Zn2+, that brings the most complete and integrated high performance antiviral technology. Its active ingredient, the Zinc, promotes the antimicrobial protection in a unique manner in the tissues treated by it, promoting the deactivation of the viruses (virucidal property, in with and without

LIBRE DE HONGOS

Aquatec tiene composición mista de hilos de algodón y poliéster y recibe acabados de protección completa antimicrobiana, anti hongos y antiviral. Nuestros acabados para áreas externas reciben en su fórmula el Zn2+, que trae la más completa e integrada tecnología de acabado antiviral de alto desempeño. Su principio activo, el Cinc, promueve la protección antimicrobiana de forma única en los tejidos tratados por él, promoviendo la desactivación de los virus (propiedad virucida, en virus no envueltos y envueltos, principalmente virus de la

ÁREAS EXTERNAS E INTERNAS

OUTDOOR / INDOOR  
ÁREA EXTERIOR / INTERIOR



Coleção  
**AQUAtec** TEXTURAS

A coleção Aquatec texturas vem para inovar os ambientes externos e internos, a coleção possui diversas combinações com lisos e estampados em diversas cores. O Aquatec possui diversas características que garantem proteção contra a ação do sol, repelência à água e óleo.

A Coleção textura vem para trazer uma coordenação de lisos e estampados da coleção Aquatec nas cores tradicionais, bege, kakhi, cinza, grafite e com destaque no tom verde folha, que continua em evidência e torna os ambientes mais aconchegantes.

Com a sua textura despojada e elegante, os tecidos texturizados são perfeitos para criar ambientes relaxantes que exalam romantismo e delicadeza, mas também pode criar um contraste interessante e surpreendente, a coleção traz sofisticação e elegância, permitindo ser usado em uma decoração despojada e capaz de trazer toda a delicadeza nas decorações rústicas.

**INFORMAÇÕES  
TÉCNICAS**

**TECHNICAL  
SPECS**

**INFORMACIONES  
TÉCNICAS**



**RAIOS DE SOL**

Com tecnologia de cores e estampas exclusivas da Fiamá, Aquatec possui resistência a ação do sol, e mantém suas cores originais por muito mais tempo. Aquatec possui resistência aos raios solares de até 500 horas de exposição direta.

**SUNLIGHT**

Using exclusive Fiamá colors and printing, Aquatec is resistant to UV rays, and maintains the vibrant colors for much longer. Resistance to sunlight up to 500 hours of direct exposure.

**RAYOS SOLARES**

Con tecnología de colores y estampados exclusivos de Fiamá, Aquatec posee resistencia a acción del sol, y mantiene sus colores originales por mucho más tiempo. Aquatec posee resistencia a los rayos solares de hasta 500 horas de exposición directa.



**DURABILIDADE**

A construção de alta resistência do Aquatec foi feita pensando na facilidade de limpeza e durabilidade do tecido. Aquatec não perde a flexibilidade original e nem o toque natural das fibras de um tecido.

**DURABILITY**

High resistance construction, Aquatec was made thinking on facility of cleaning and durability. Aquatec does not lose an original flexibility nor the natural touch of the fibers of a fabric.

**DURABILIDAD**

La construcción de alta resistencia de Aquatec fue hecha pensando en la facilidad de limpieza y durabilidad del tejido. Aquatec no pierde la flexibilidad original y ni el toque natural de las fibras de un tejido.



**PIONEIRISMO**

São mais de 60 anos inovando e melhorando todos os processos têxteis, isso só é possível com know-how de uma empresa que respeita a natureza e é pioneira em tecidos para decoração com acabamentos de impermeabilidade.

**PIONEERING**

For more 60 years innovating and improving all the textiles process, it was only possible with know-how of a company that respect the nature and is pioneering in fabrics for decoration with impermeable finishing.

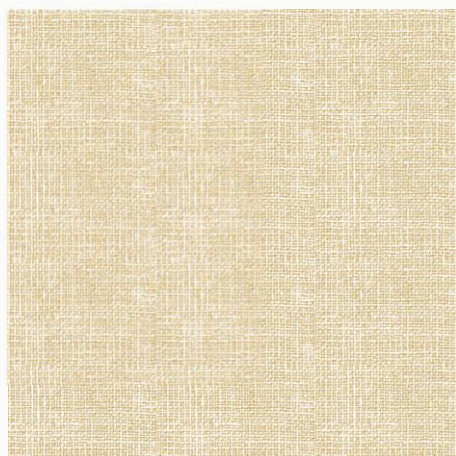
**PIONERISMO**

Por más de 60 años innovando y mejorando todos los procesos textiles, esto sólo es posible con know-how de una empresa que respeta la naturaleza y es pionera en tejidos para decoración con acabados de impermeabilidad.

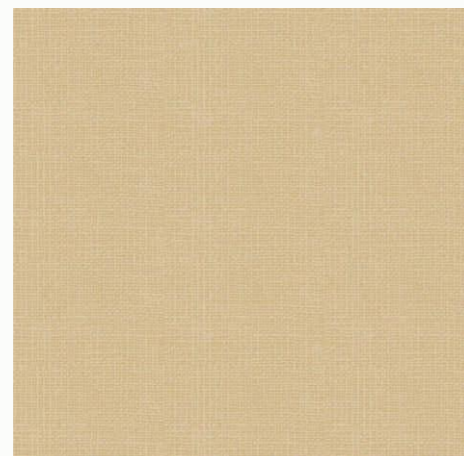
**A FIAMA FOI PIONEIRA  
EM DESENVOLVER TECIDOS  
PARA DECORAÇÃO COM  
ACABAMENTOS DE PROTEÇÃO**



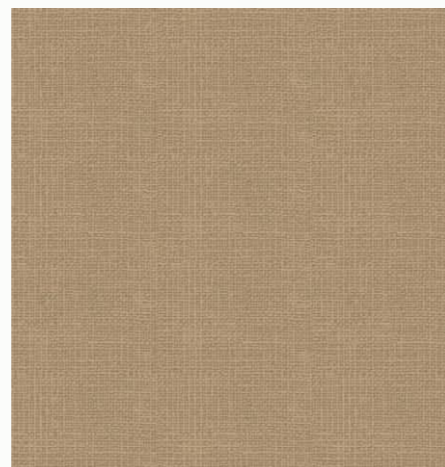
Coleção  
**AQUA**tec *TEXTURAS*



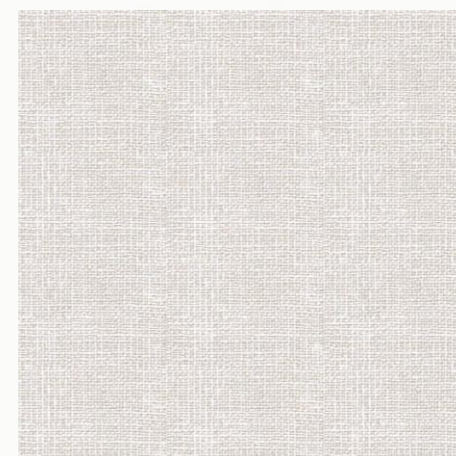
00006.00460.022848.002.90



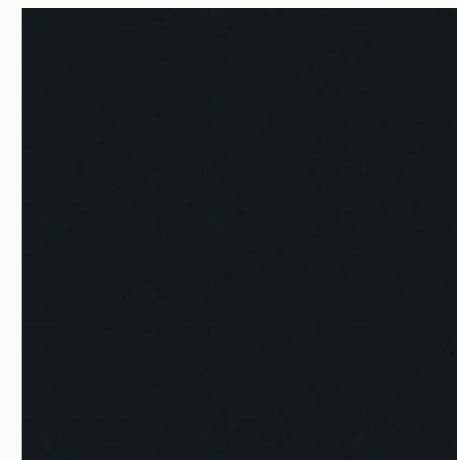
00006.00460.022848.005.90



00006.00460.022848.006.90



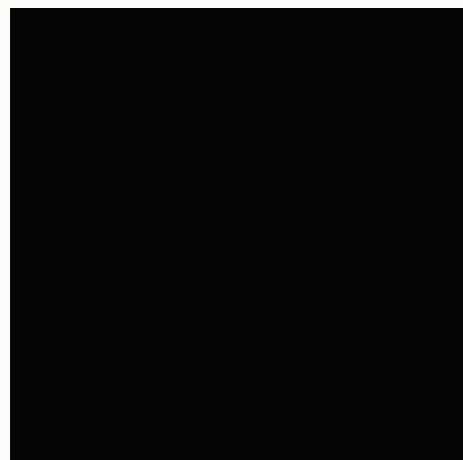
00006.00460.022848.001.90



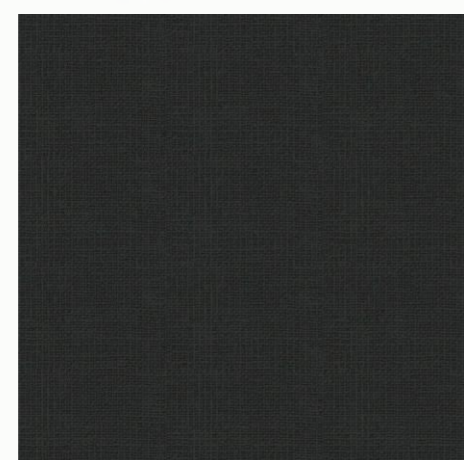
00006.00460.022848.022.90



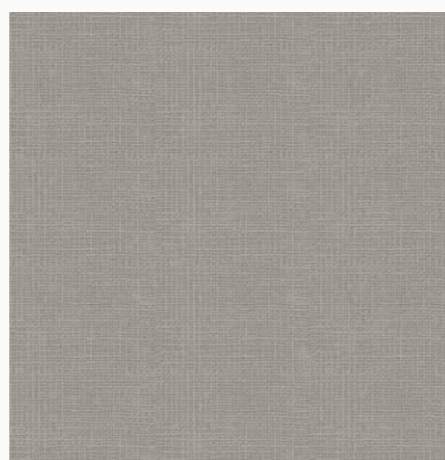
00006.00460.022848.015.90



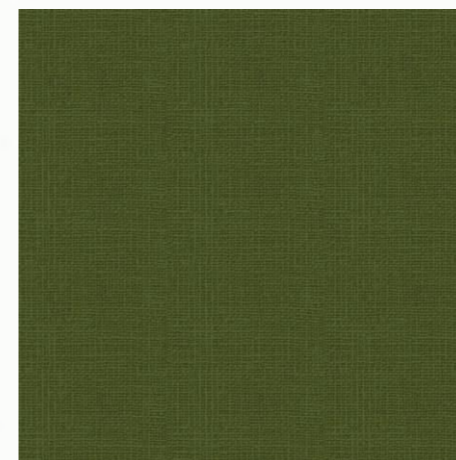
00006.00460.022848.019.90



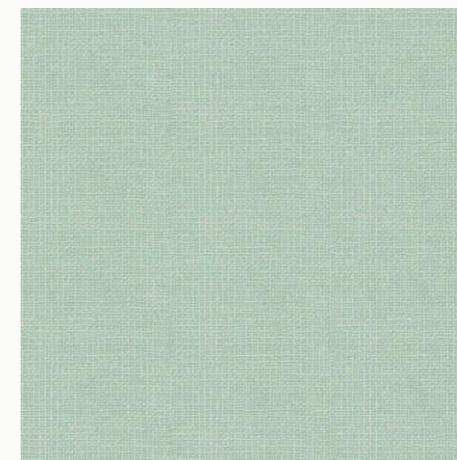
00006.00460.022848.023.90



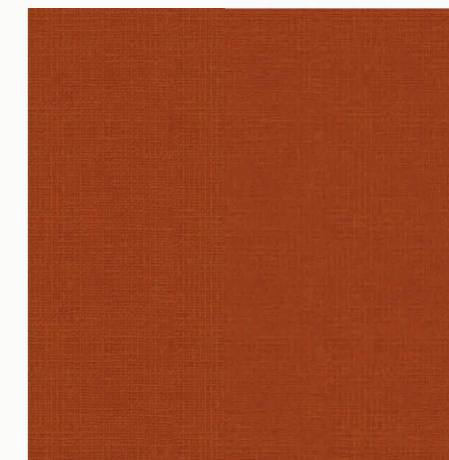
00006.00460.022848.007.90



00006.00460.022848.021.90



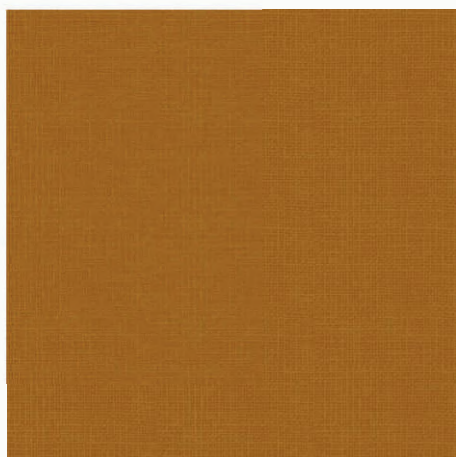
00006.00460.022848.011.90



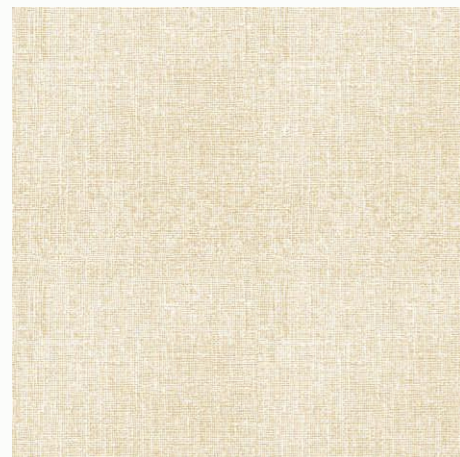
00006.00460.022848.016.90



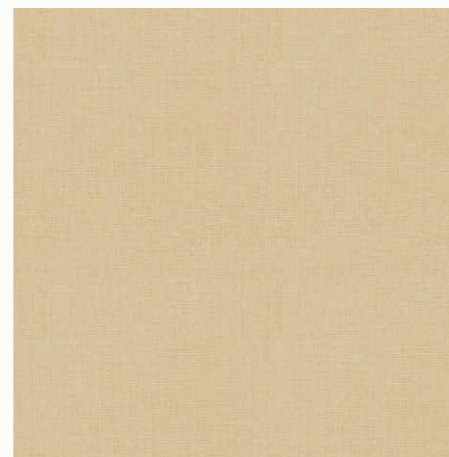
Coleção  
**AQUA**tec *TEXTURAS*



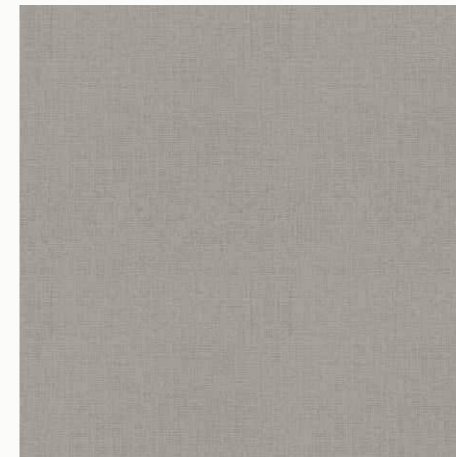
00006.00460.022848.018.90



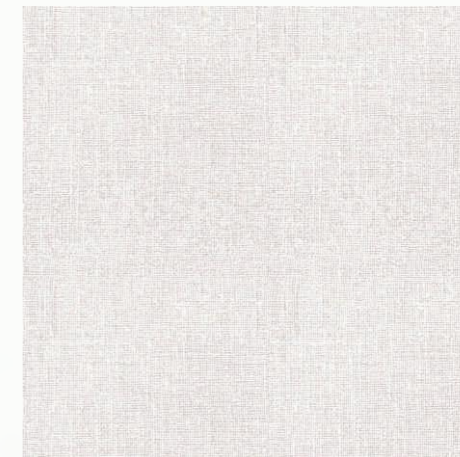
00006.00460.022847.002.90



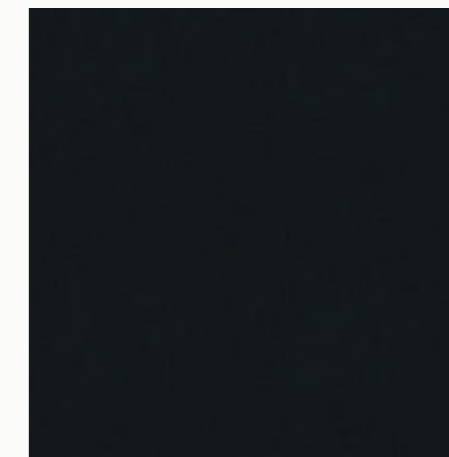
00006.00460.022847.005.90



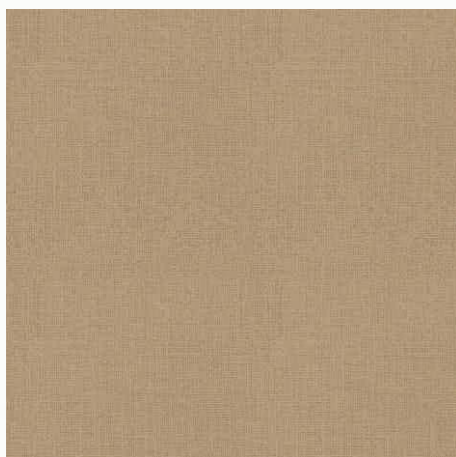
00006.00460.022847.007.90



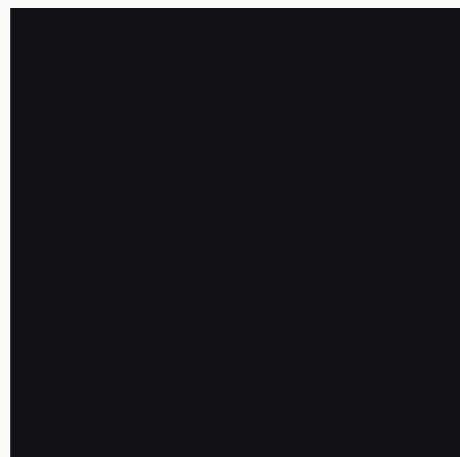
00006.00460.022847.001.90



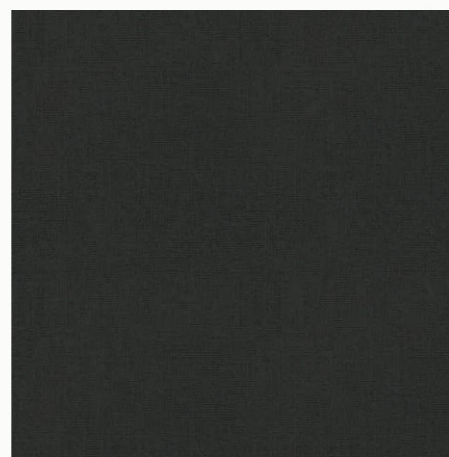
00006.00460.022847.022.90



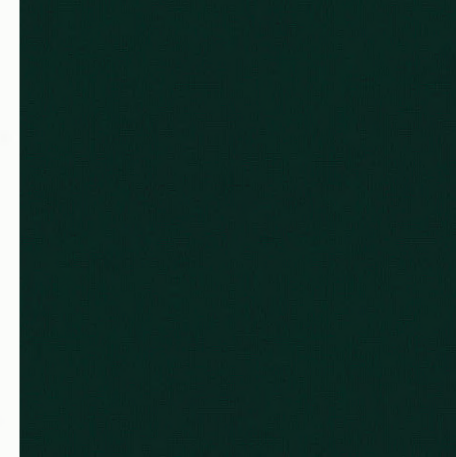
00006.00460.022847.006.90



00006.00460.022847.019.90



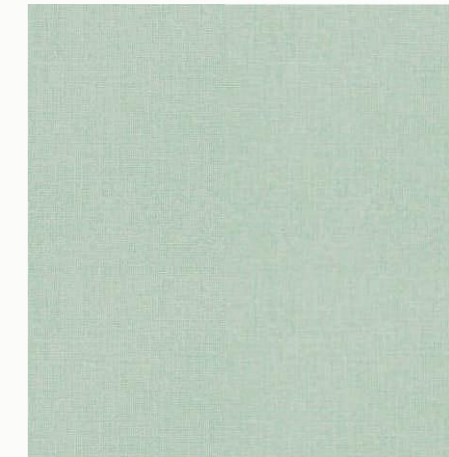
00006.00460.022847.023.90



00006.00460.022847.015.90



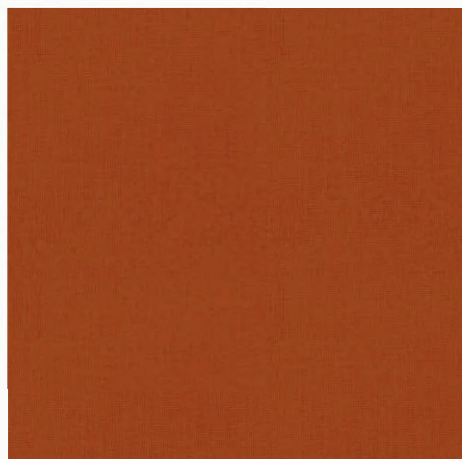
00006.00460.022847.021.90



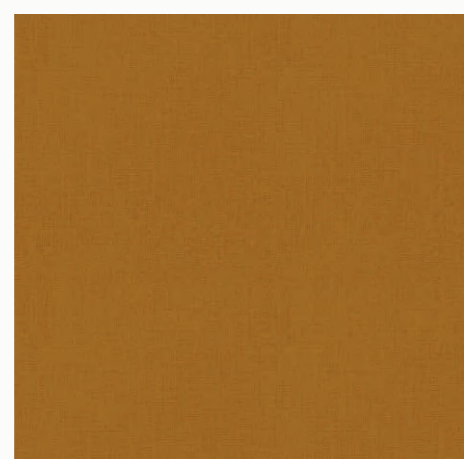
00006.00460.022847.011.90



Coleção  
**AQUA**tec *TEXTURAS*



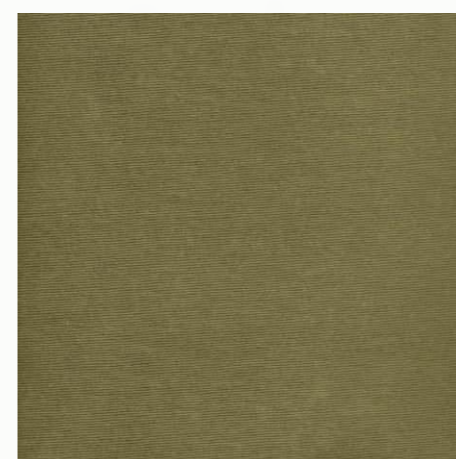
00006.00460.022847.016.90



00006.00460.022847.018.90



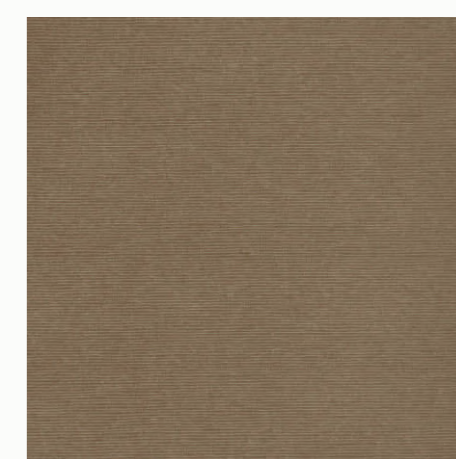
00006.40033.000000.000.90



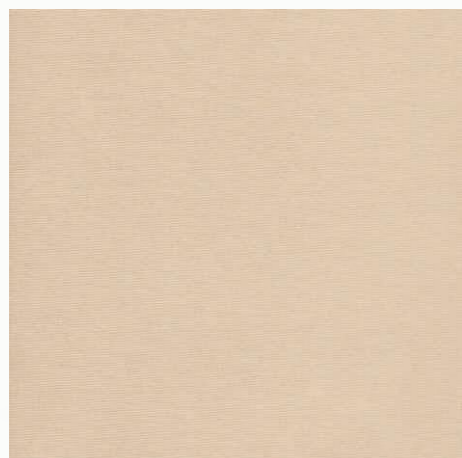
00006.00460.022307.342.90



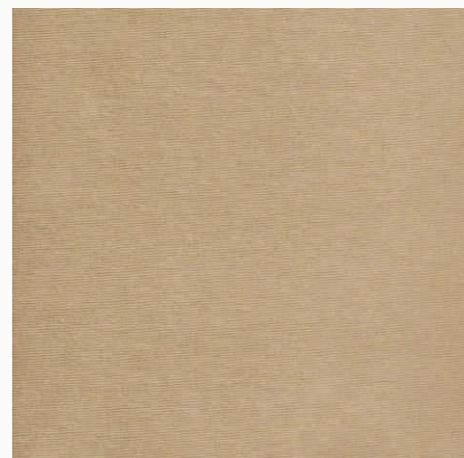
00006.00400.022307.003.90



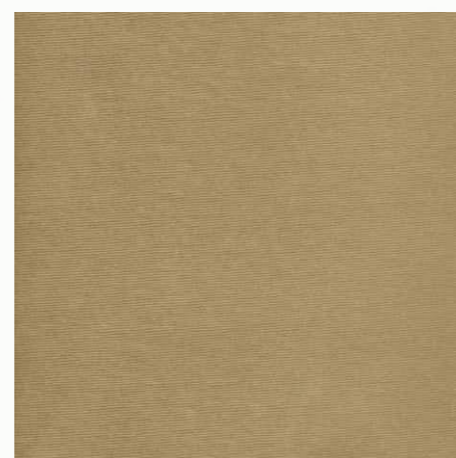
00006.00460.022307.382.90



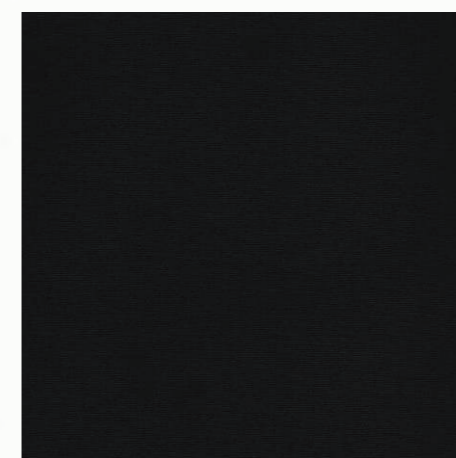
00006.00460.022307.550.90



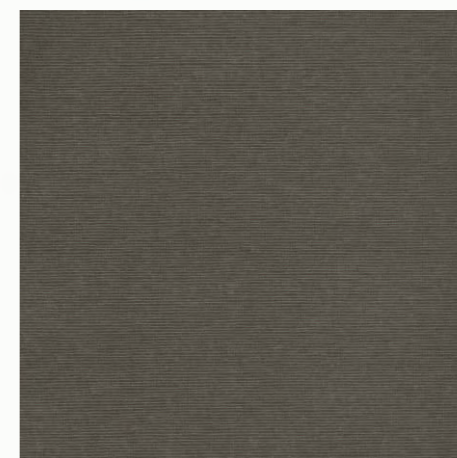
00006.00400.022307.287.90



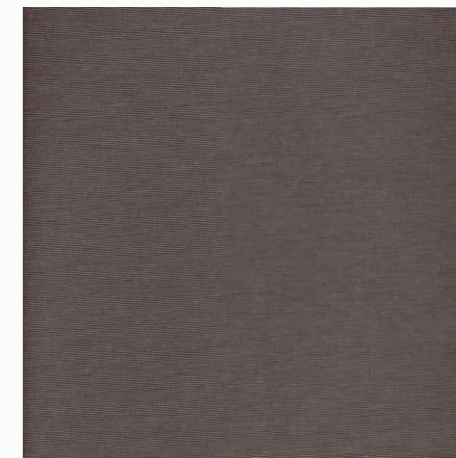
00006.00400.022307.012.90



00006.00460.022307.329.90



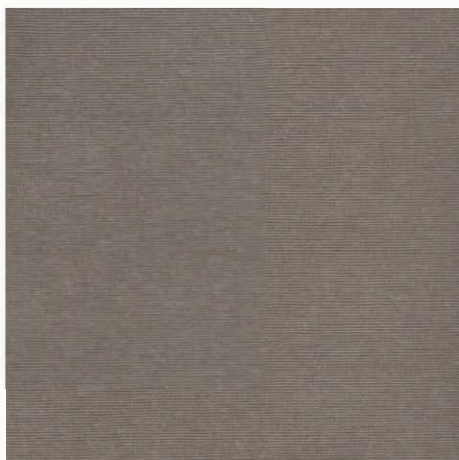
00006.00460.022307.312.90



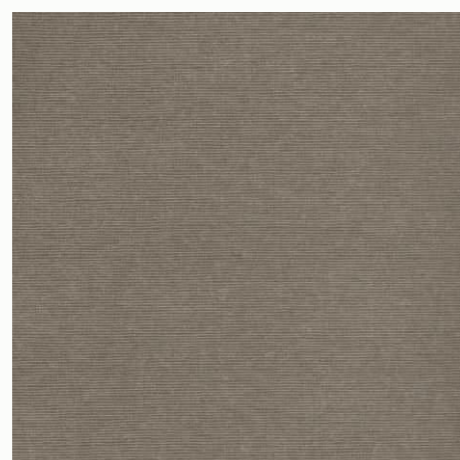
00006.00400.022307.176.90



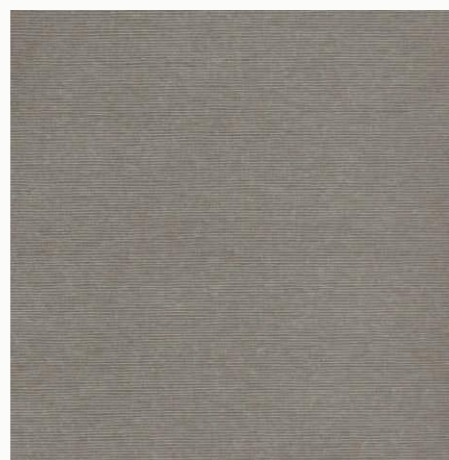
Coleção  
**AQUA**tec *TEXTURAS*



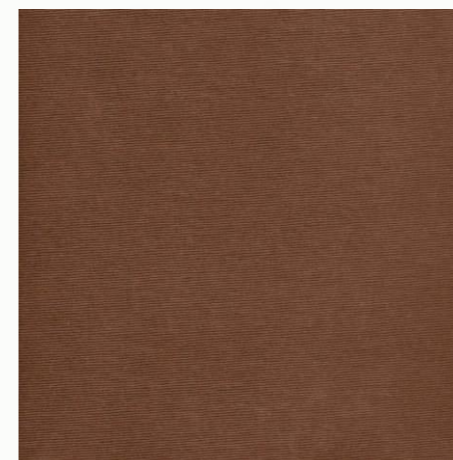
00006.00400.022307.004.90



00006.00400.022307.013.90



00006.00460.022307.336.90



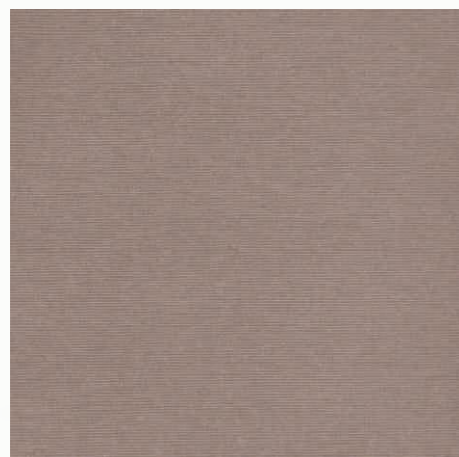
00006.00460.022307.383.90



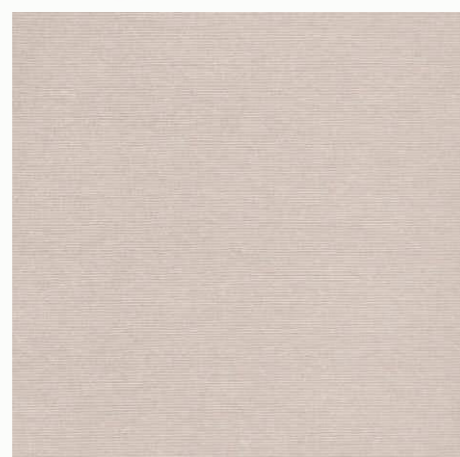
00006.00400.022307.006.90



00006.00460.022307.385.90



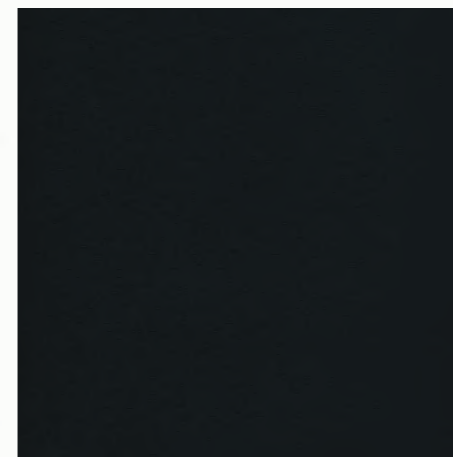
00006.00460.022307.522.90



00006.00460.022307.523.90



00006.00460.022307.350.90



00006.00460.022307.341.90



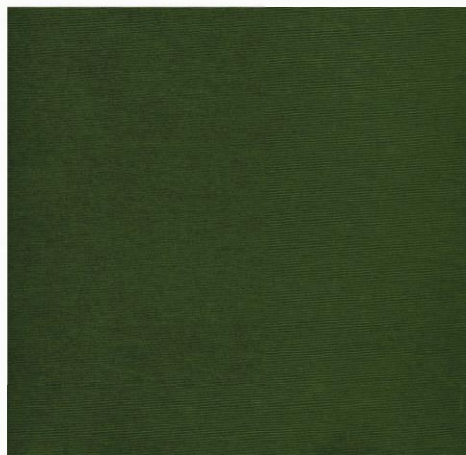
00006.00400.022307.007.90



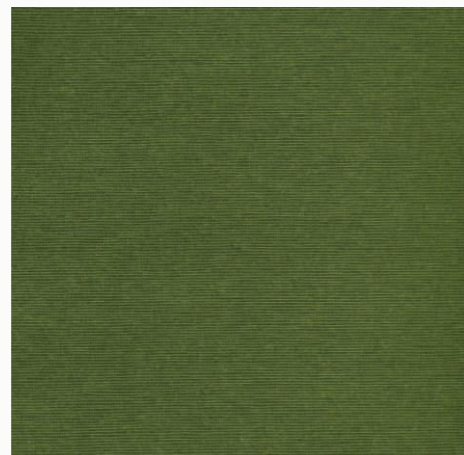
00006.00400.022307.014.90



Coleção  
**AQUA**tec *TEXTURAS*



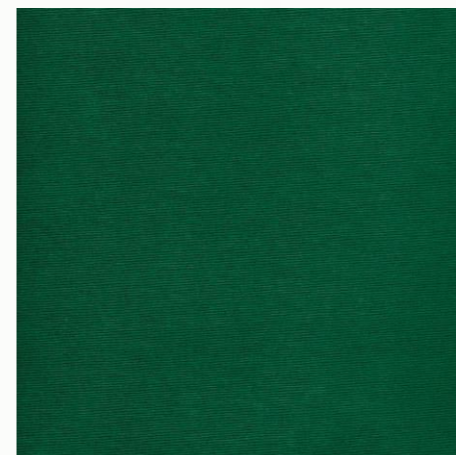
00006.00460.022307.524.90



00006.00460.022307.387.90



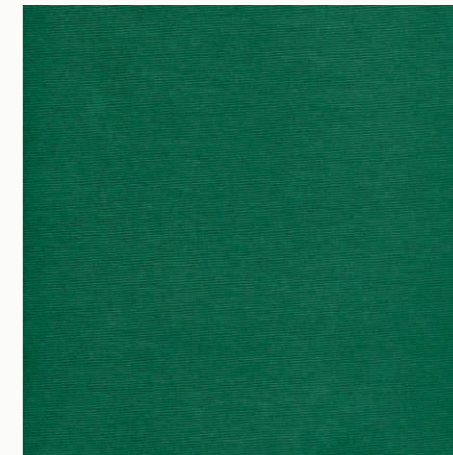
00006.00400.022307.002.90



00006.00460.022307.549.90



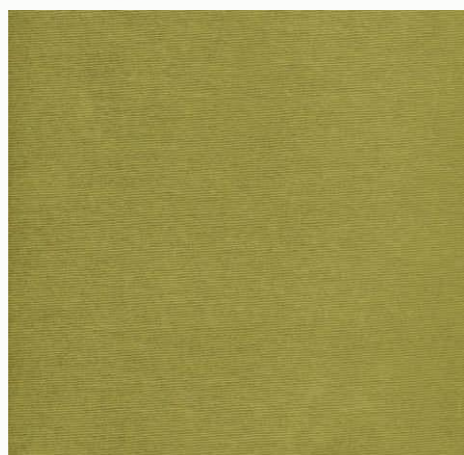
00006.00460.022307.418.90



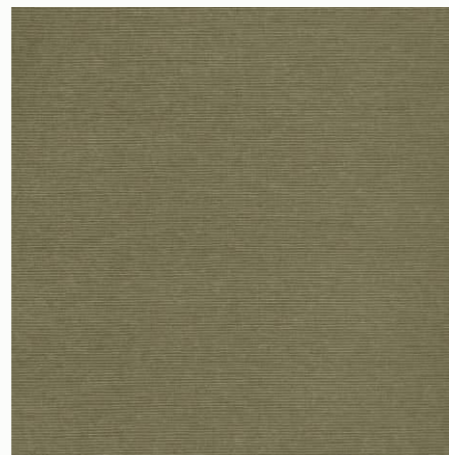
00006.00460.022307.344.90



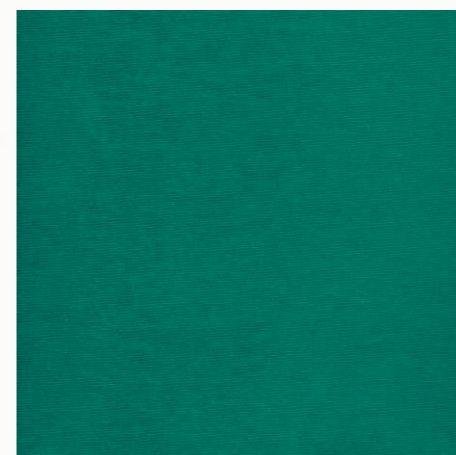
00006.00460.022307.343.90



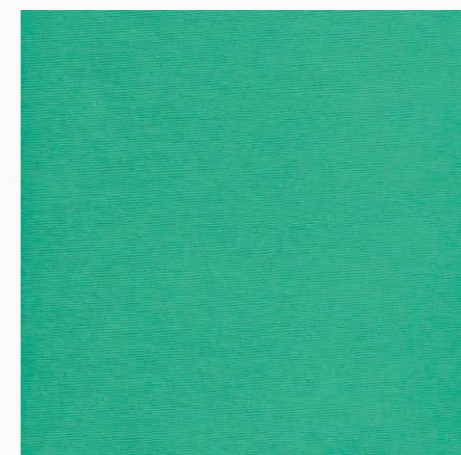
00006.00400.022307.001.90



00006.00460.022307.338.90



00006.00400.022307.177.90



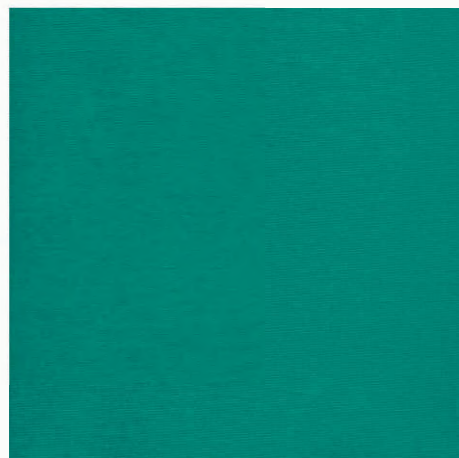
00006.00400.022307.011.90



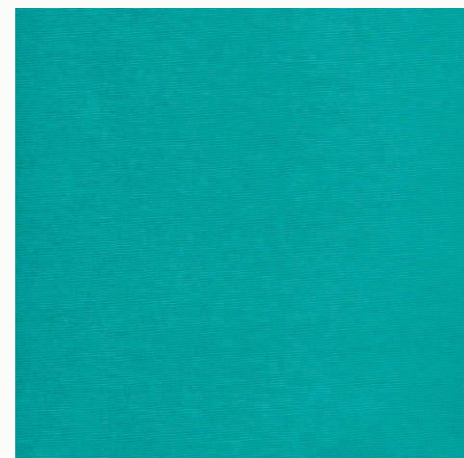
00006.00460.022307.386.90



Coleção  
**AQUA**tec *TEXTURAS*



00006.00400.022307.285.90



00006.00460.022307.337.90



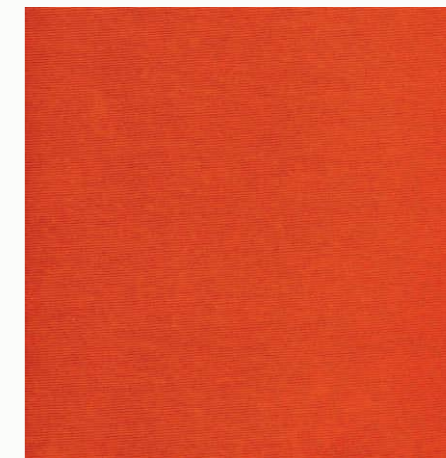
00006.00460.022307.334.90



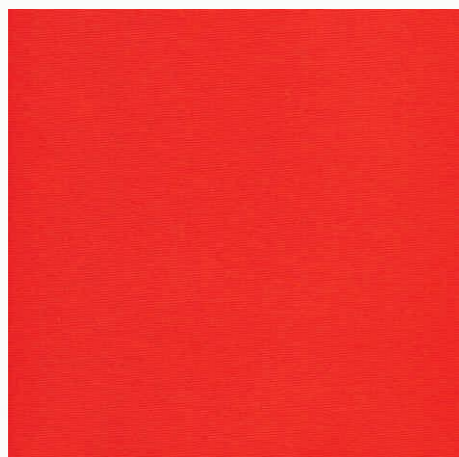
00006.00460.022307.548.90



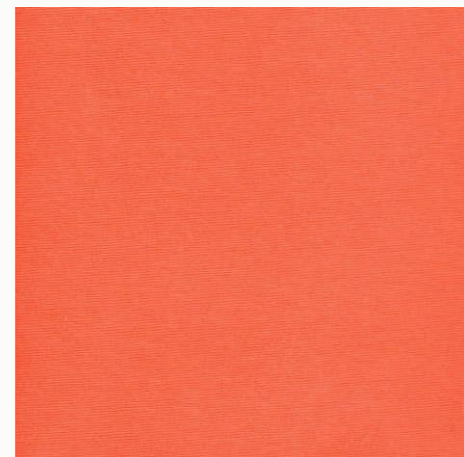
00006.00460.022307.500.90



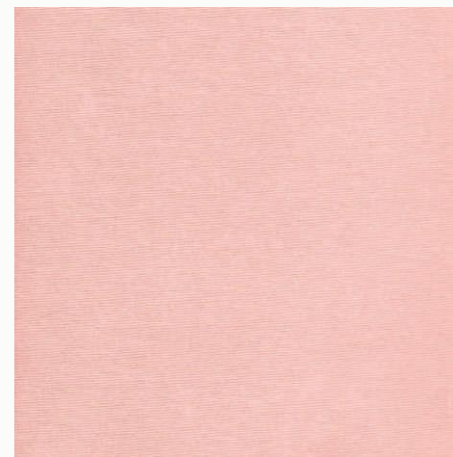
00006.00400.022307.174.90



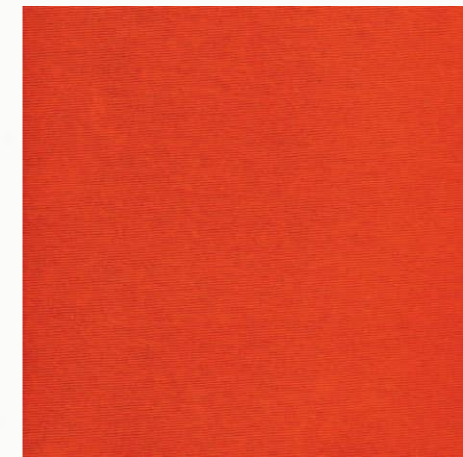
00006.00400.022307.008.90



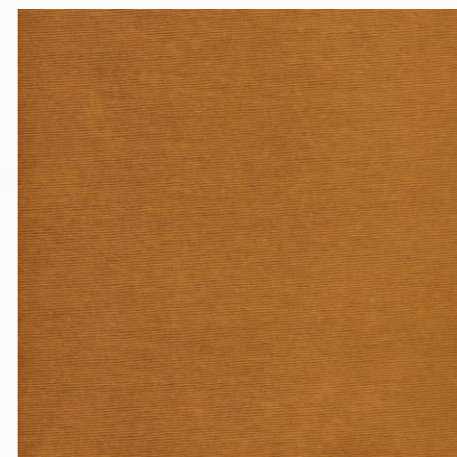
00006.00460.022307.419.90



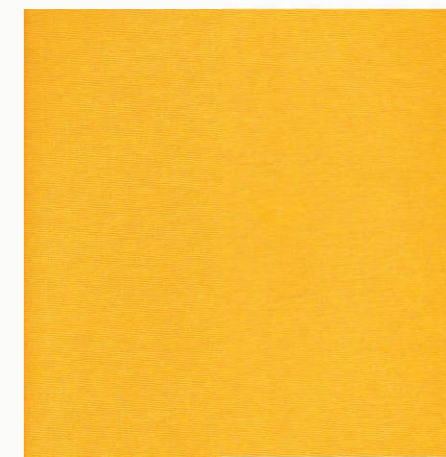
00006.00460.022307.421.90



00006.00460.022307.340.90



00006.00460.022307.501.90



00006.00460.022307.339.90



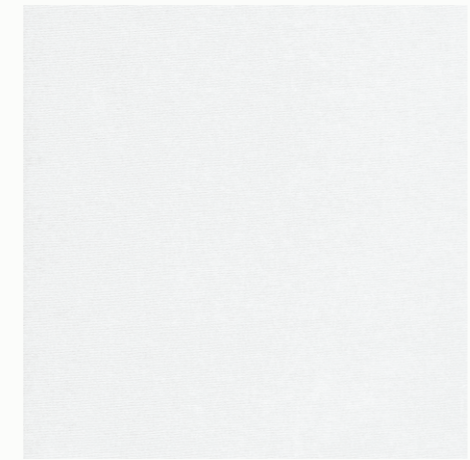
Coleção  
**AQUA**tec *TEXTURAS*



00006.00392.000000.000.88



00006.00400.000000.000.88



00006.00460.000000.000.88

